

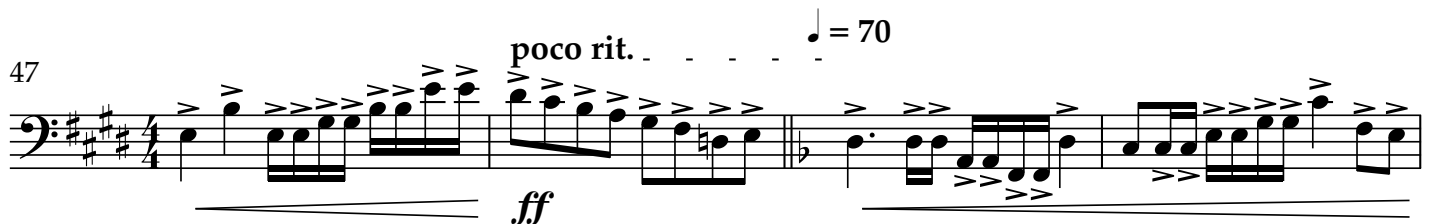
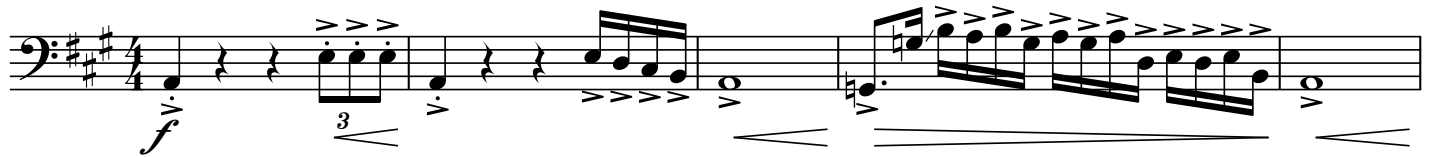
# RESILIENT HOPE

*A Medley of Two Advent Hymns*

Trombone

COMPOSED by Traditional  
Arrangement by Daniel Orellana

♩ = 90



Arrangement 2022 © Daniel Orellana | All Rights Reserved.  
danielorellanamusic.com Do not duplicate or share without permission.

The bass line of 'The Rose Tree' is written in bass clef with a key signature of one flat (B-flat). The melody consists of several measures, including a triplet of eighth notes and a final measure with a double bar line and repeat sign. The notation includes various musical symbols such as accents, slurs, and a repeat sign.

Musical notation for the bass line of 'The Rose Tree'. The key signature is one sharp (F#). The melody is written on a single staff with a treble clef. It begins with a quarter rest, followed by a series of eighth and sixteenth notes, including triplets. The piece concludes with a double bar line and a repeat sign.

The bass line of 'The Rose Tree' is written in G major (one sharp) and 2/4 time. It begins with a double bar line and a repeat sign. The melody starts on G2, moving up stepwise to D3, then down to C2, and finally to B1. The first measure is a half note G2. The second measure is a half note D3. The third measure is a half note C2. The fourth measure is a half note B1. The fifth measure is a half note G2. The sixth measure is a half note D3. The seventh measure is a half note C2. The eighth measure is a half note B1. The ninth measure is a half note G2. The tenth measure is a half note D3. The eleventh measure is a half note C2. The twelfth measure is a half note B1. The thirteenth measure is a half note G2. The fourteenth measure is a half note D3. The fifteenth measure is a half note C2. The sixteenth measure is a half note B1. The seventeenth measure is a half note G2. The eighteenth measure is a half note D3. The nineteenth measure is a half note C2. The twentieth measure is a half note B1. The piece ends with a double bar line.

The bass line of 'The Rose Tree' is written in G major (one sharp) and 2/4 time. It begins with a treble clef and a key signature of one sharp (F#). The melody starts on G4, moving up stepwise to D5, then down to G4, and continues with a series of eighth and sixteenth notes. A triplet of eighth notes (G4, A4, B4) is marked with a '3' below it. The piece concludes with a final G4 note.

The bass line of 'The Rose Tree' is written on a single staff in bass clef with a key signature of one sharp (F#). The melody begins with a series of eighth notes, followed by a half note, and then a series of eighth notes with a triplet marking. The piece concludes with a final eighth note and a quarter rest.

The bass line is written on a single staff in bass clef with a key signature of one sharp (F#). It consists of several measures of music, including eighth and sixteenth notes, and rests. The melody is simple and characteristic of the song.

The musical score for the bass line of 'The Rose Tree' is written on a single staff. It begins with a treble clef and a key signature of one sharp (F#). The melody starts with a quarter note G4, followed by a beamed eighth-note pair (A4-B4), and then a quarter note C5. After a whole rest, it continues with a quarter note D5, a beamed eighth-note pair (E5-F#5), and a quarter note G5. The piece then changes to 2/4 time, marked with a double bar line. It begins with a quarter note A4, followed by a quarter note B4. The time signature changes to 4/4, marked with another double bar line. The melody continues with a half note C5, a quarter note D5, a quarter note E5, and a quarter note F#5. The piece concludes with a half note G5, a quarter note A5, and a quarter note B5. The score includes dynamic markings: *ff* (fortissimo) under the first 4/4 measure and *mp* (mezzo-piano) under the final 4/4 measure. There are also various articulation marks, including slurs and accents, throughout the piece.

[illegible]